



## T-Shirt, Hoodies and Hat Reservation Form

Very LIMITED quantities will be available at the National Specialty, so pre-ordering is highly recommended. Delivery will be made at the National Specialty. If you can't attend, we will ship!

Shirts are 50/50 cotton/poly.  
Available in Short Sleeve, Woman's V-Neck, Hoodies and Hats.

Colors available in the Uni-sex T's: Light Blue, Desert Sand, Navy, and White

Colors available in the Woman's V-Neck T: Aquatic Blue, White, Navy, and Coral.

Colors available in the Hoodies: Navy, Sand, Athletic Heather, and Steel Blue

Colors available in the Hats: Black, Grey, or Navy

Please visit [ASDCA.org](http://ASDCA.org) to view logo in full color. This logo is a 4 color screen print.

Colors available in the Uni-sex T's: Light Blue, Desert Sand, Navy, and White

Uni-Sex T-Shirt	Indicate Color	Amount	Quantity
Small		\$20.00	
Medium		\$20.00	
Large		\$20.00	
X-Large		\$20.00	
XX-Large		\$20.00	
3XL		\$20.00	



Light Blue



Desert Sand



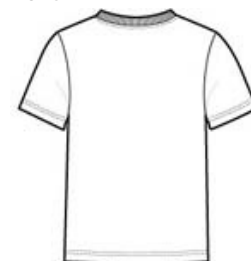
Navy



White



front



back

Colors available in the Woman's V-Neck T: Aquatic Blue, White, Navy, and Coral

Woman's V-Neck T-Shirt	Indicate Color	Amount	Quantity
Small		\$20.00	
Medium		\$20.00	
Large		\$20.00	
X-Large		\$20.00	
XX-Large		\$20.00	
3XL		\$20.00	



Aquatic Blue



White



Navy



Coral



front



back

Colors available in the Hoodies: Navy, Sand, Athletic Heather, and Steel Blue

Hoodies	Indicate Color	Amount	Quantity
Small		\$30.00	
Medium		\$30.00	
Large		\$30.00	
X-Large		\$30.00	
XX-Large		\$30.00	
3XL		\$30.00	



Navy



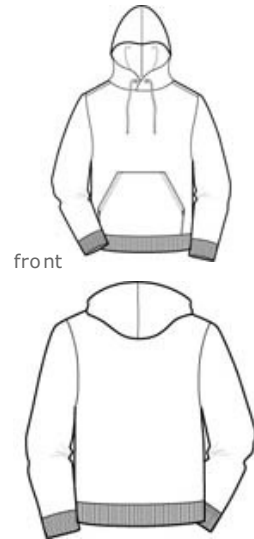
Sand



Athletic Heather



Steel Blue



Colors available in the Hats: Black, Grey, or Navy

Hats	Indicate Color	Amount	Quantity
		\$20.00	



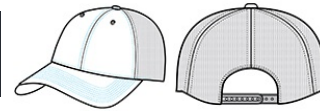
Black



Grey



Navy



Orders MUST be received by: **September 10, 2019**

Orders can be shipped for an additional \$10.00 for the first shirt and \$3.00 for each additional shirt ordered.

**Make all checks payable to ASDCA**

**Name:** \_\_\_\_\_

**Address: (if shipping)** \_\_\_\_\_

\_\_\_\_\_

**Phone:** \_\_\_\_\_

**Email:** \_\_\_\_\_

(Receipt of order will be confirmed by email.)

Total enclosed: \$ \_\_\_\_\_

**Mail to:**  
**Debbie Gschwender**  
**7189 Hacienda Way, Nampa, Idaho 83686**  
**(208) 477-3925**  
**dlgschwender@gmail.com**